



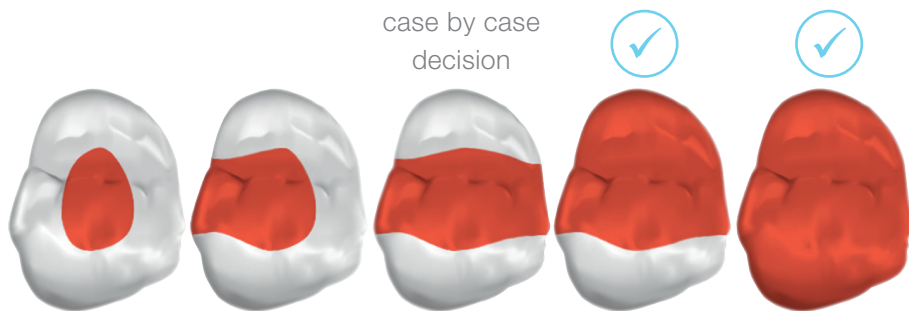
D.T. Light-Posts – specific Double Taper Shape

Your key to
preserving
more dentin

Watch-outs when placing a post

1) Is a post really needed?

In endodontically treated teeth with more than one missing dentin wall, there is a need to place a post to ensure the retention of the coronal structure.



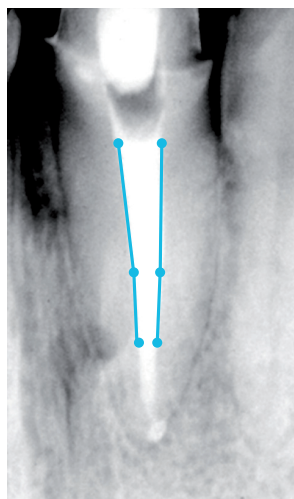
2) Important things to consider for the post placement

- The high variety of the endodontic morphology calls for posts that fit to the shape of the prepared canal while
- ensuring to prepare the root canal for the post placement by preserving as much dentin as possible.



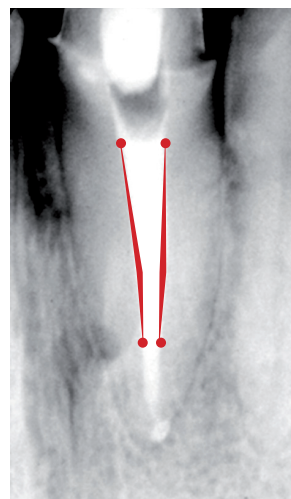
Introducing D.T. Light-Posts with a specific Double Taper Shape

All D.T. Light-Posts feature a specific and innovative shape called Double Taper. This shape enables the correspondence between the root canal morphology obtained after the root canal preparation and the fiber post used by the clinician. This results in less dentin removal compared to single tapered posts. D.T. Light-Posts demonstrate high clinical in vivo performance that has been documented in more than 100 studies.¹



Modern preparation

Typical root canal progression after preparation with modern systems: double conicity.²

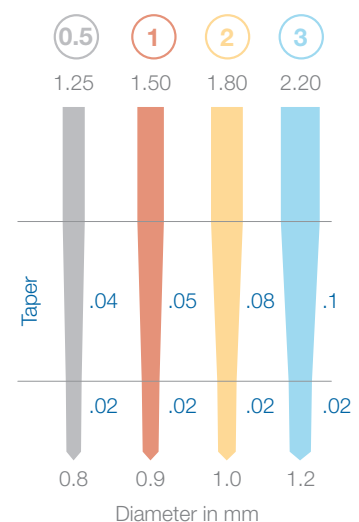


Single taper shape dentin waste

Unnecessary dentin removal (marked in red) with a single tapered post.²

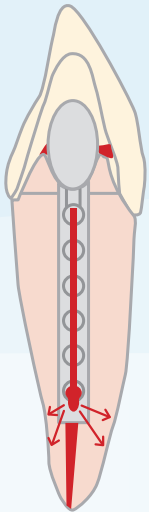
The right fit

The Double Taper feature is available in four sizes – usually the posts fit the treated canal right out of the box.



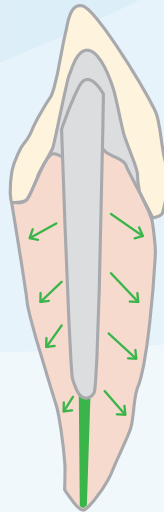
The benefits of fiber posts compared to metal posts

- Minimization of risk for root fracture¹
- Better stress distribution
- No corrosion or galvanism
- Better aesthetics



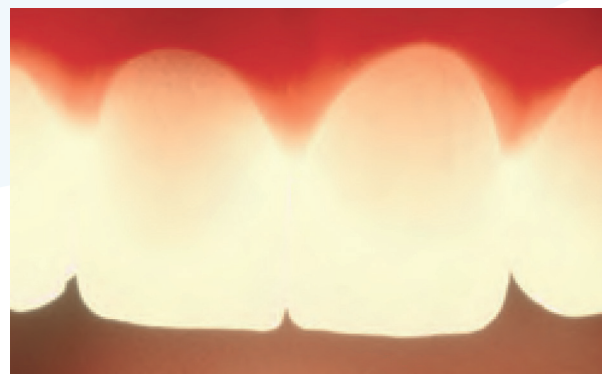
Metal post

High modulus of elasticity inducing root fractures.



Fiber post

Low modulus of elasticity ensuring correct distribution of chewing loads.



Transmitted light image of a fiber post restored tooth (left) with perfect aesthetics.⁴

Specific D.T. Light-Posts features for convincing results

Improved Quartz Fiber Technology

- Higher tensile strength than glass fiber²
- Superior light-transmission properties for polymerization of adhesive and cement³

"D.T. Light-Posts enable less invasiveness, by using Double Taper design. Their light transmission properties are ideal underneath translucent definitive restorations thanks to quartz fiber technology."



Prof. D. Edelhoff

Patented Illusion Technology

(D.T. LIGHT-POST ILLUSION X-RO)

- Thermally reactive color pigments
- Helps locate the post and identify the post size

37 °C: At body temperature, posts are barely visible
< 29 °C: After cooling, post and post sizes are clearly visible.²



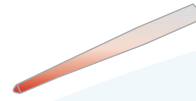
¹Akkayan, Begüm, and Turgut Gülmez. "Resistance to fracture of endodontically treated teeth restored with different post systems." The Journal of prosthetic dentistry 87.4 pages 431-437, 2002. ²Tensile resistance of several materials. Oral Health Magazine, 2002. ³Y. K. Kim et al. "Degree of conversion of dual cured resin cement light-cured through three fibre posts within human root canals: an ex vivo study." International Endodontic Journal doi:10.1111/j.1365-2591.2009.01565.x.

⁴Prof. D. Edelhoff, University of Munich, Germany.

The D.T. Light-Posts family – all features per product at a glance



D.T. LIGHT-POST



D.T. LIGHT-POST ILLUSION X-RO

Double Taper Shape



Improved Quartz Fiber Technology



Patented Illusion Technology

Thermally reactive color pigments



Recommended products for using with D.T. Light-Posts



Adhesive:

Prime&Bond active® and Self Cure Activator
from Dentsply Sirona



Cement:

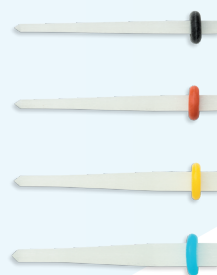
core-X® flow from Dentsply Sirona

D.T. Light-Posts – assortment overview

■ Refill blister packs

- Individually packed for convenience
- 2 blister packs of 5 posts each

	EN, DE, ES, FR, IT, NL, PT	EN, DA, EL, NO, SV, FI, HE	EN, HI, TH, AR
D.T. LIGHT-POST Size #0.5	MR1DTLI008125	MR2DTLI008125	MR9DTLI008125
D.T. LIGHT-POST Size #1	MR1DTLI109150	MR2DTLI109150	MR9DTLI109150
D.T. LIGHT-POST Size #2	MR1DTLI210180	MR2DTLI210180	MR9DTLI210180
D.T. LIGHT-POST Size #3	MR1DTLI312220	MR2DTLI312220	MR9DTLI312220



	EN, DE, ES, FR, IT, NL, PT	EN, DA, EL, NO, SK, SV, HE	EN, LT, FI	EN, HI, KO, PT-B, TH, AR
D.T. LIGHT-POST ILLUSION X-RO Size #0.5	MR1DTIL008125	MR2DTIL008125	MR3DTIL008125	MR9DTIL008125
D.T. LIGHT-POST ILLUSION X-RO Size #1	MR1DTIL109150	MR2DTIL109150	MR3DTIL109150	MR9DTIL109150
D.T. LIGHT-POST ILLUSION X-RO Size #2	MR1DTIL210180	MR2DTIL210180	MR3DTIL210180	MR9DTIL210180
D.T. LIGHT-POST ILLUSION X-RO Size #3	MR1DTIL312220	MR2DTIL312220	MR3DTIL312220	MR9DTIL312220



■ D.T. Light-Post Universal and Finishing Drill

- Universal drill for removing the root canal filling
- Finishing drill for post fitting in the root canal
- Pack of 1 piece

	EN, DE, ES, FR, IT, NL, PT	EN, DA, EL, NO, SK, SV, HE	EN, LT, FI	EN, HI, KO, PT-B, TH, AR
D.T. LIGHT-POST UNIVERSAL DRILL Size #0.5	MR1DTDR100000	MR2DTDR100000	MR3DTDR100000	MR9DTDR100000
D.T. LIGHT-POST FINISHING DRILL Size #1	MR1DTDR100001	MR2DTDR100001	MR3DTDR100001	MR9DTDR100001
D.T. LIGHT-POST FINISHING DRILL Size #2	MR1DTDR100002	MR2DTDR100002	MR3DTDR100002	MR9DTDR100002
D.T. LIGHT-POST FINISHING DRILL Size #3	MR1DTDR100003	MR2DTDR100003	MR3DTDR100003	MR9DTDR100003





For further information please contact your preferred distributor or visit www.vdw-dental.com.

 **R.T.D. (RECHERCHES TECHNIQUES DENTAIRES)**
3 Rue Louis Néel, Technoparc, Espace Gavanière
38120 Saint-Égrève
France
Tel +33 4 76 56 56 66
Fax +33 4 76 56 11 77
info@rtd.fr

Distributed by:

VDW GmbH
Bayerwaldstr. 15
81737 Munich
Germany
Tel +49 (0) 89 62734-0
Fax +49 (0) 89 62734-304
info@vdw-dental.com

